

# Modbus and BACnet protocols (RTU/MSTP/IP). Web browser capability.

MULTIMEDIDORES con capacidad de medición desde 1 a 12 circuitos trifásicos, 120/208 V o 277/480 V, circuitos trifilares 120/240 V, network 120/208 V o combinaciones

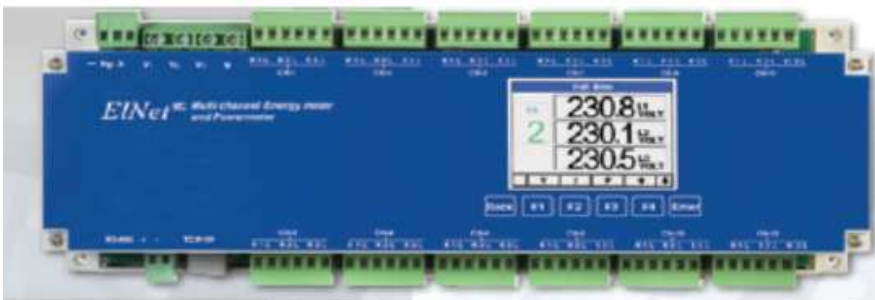
## ELNet MC Multi channels Energy Powermeter



MC2- 1 or 2 sets of three phase channels



MC8 - 8 sets of three phase channels



Up to 12 sets of three phase energy meters or  
Up to 36 single phase energy meters or  
Up to 36 Digital Inputs.  
Up to 4 months of energy data logging.

Accuracy 0.2 %.

Ethernet (TCP/IP) and RS-485 ports.

Modbus and BACnet protocols (RTU/MSTP/IP).

Web browser capability.

Simple operated menus.

High resolution color display (320x240 pixels).

Simple installation – DIN Rail mounted.

Multilingual support.

SD card 16GB.

Ethernet (TCP/IP), Web browser capability.

Power quality measurements including EN50160 and class A measurements.

### Technical Specifications

Power Requirements : 90-250 VAC; 110-280 VDC  
: 60/50 Hz; 11VA

Dimensions (H x W x D) : 110 x 300 x 60 mm

Shipping Weight : 1,250 gr.

Working Conditions : -20 – 70°C; 0 - 95 RH%

#### Measurement Range:

Voltage : 0 - 550 VAC

Voltage (with transformer) : up to 999999999 MV

Current (with transformer) : up to 999999999 MA

Maximum Input Voltage : 1000V

Maximum Input Current : 6A

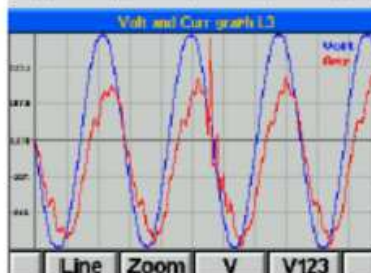
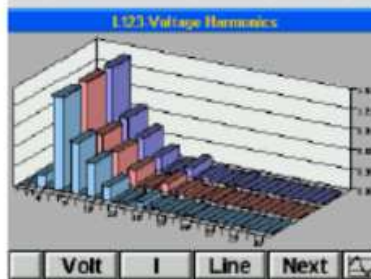
Supported Current Sensors : 0.333 V/ 1 Amp/  
5 Amp/ 63 Amp/ 0.1 Amp

Measurement Type : True RMS  
: up to the 64th harmonic  
: 1600 samples per cycle

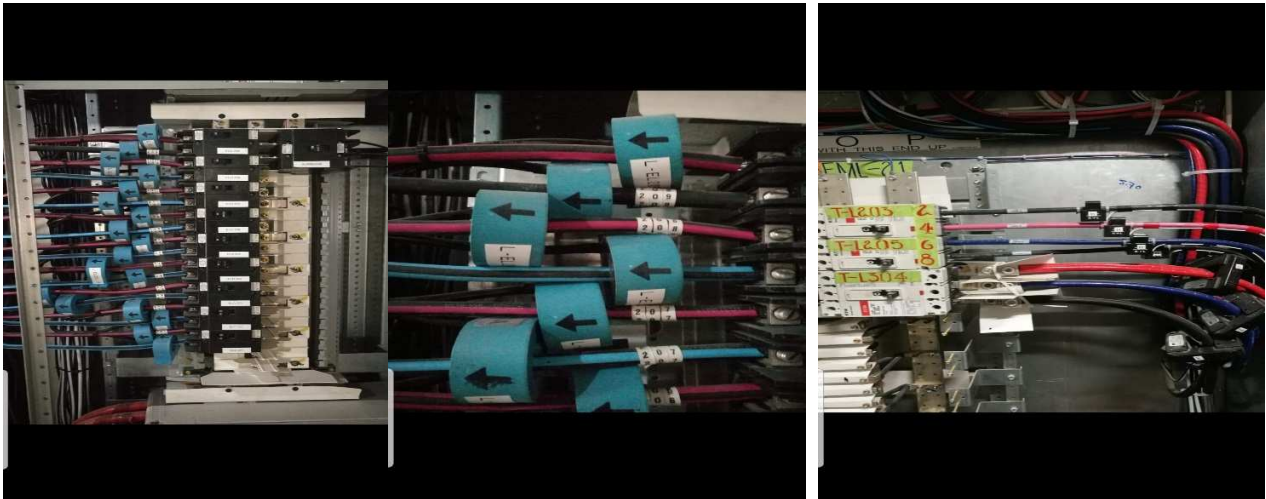
#### Standard Approvals:

EN62052-11, EN62053-22, EN62053-23, CE, UL61010,

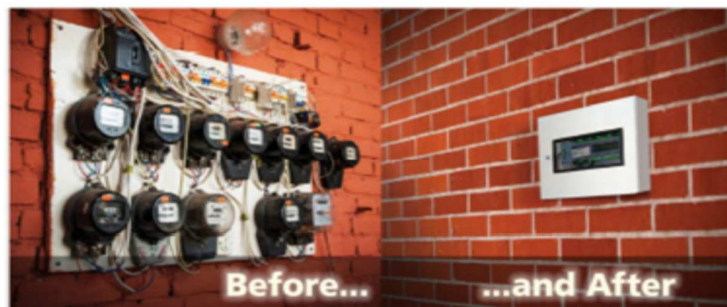
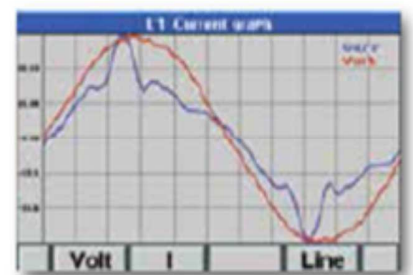
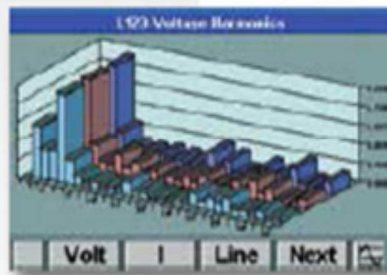
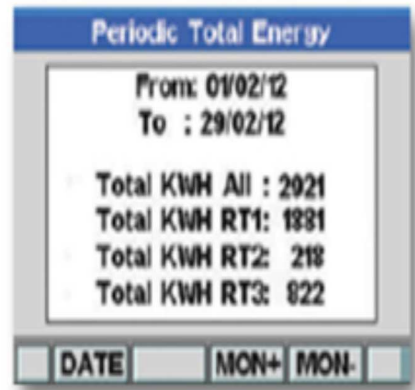
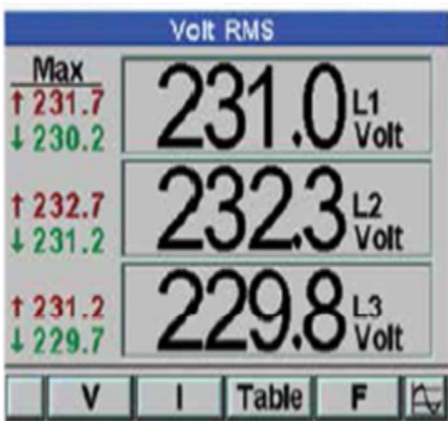
EN61000-3-2, EN61000-3-3, BTL



Medición en Centro de Carga con Transformadores de Corriente de núcleo partido o de tipo sólido



Pantallas para cada subpunto de Medición



# INSTALACION CON TRANSFORMADORES DE CORRIENTE

